

LOWER WABASH RIVER & OXBOW LAKE PROJECT

White County SWCD is looking for landowners in a special project area to assist with enrolling and restoring wetlands.

OXBOW LAKES

Oxbow Lakes in White, Gallatin, Wabash, and Edwards County are high priorities for these projects. If you have land along an oxbow lake or the Wabash River you may qualify.

For more information call White County SWCD · Heidi Uselton · Resource Conservationist · (618)-382-2213 Ext. 112 · Jewel Brooks · Administrative Coordinator · (618)-382-2213 Ext. 101 Or Visit us online at ilwhitecoswcd.org

Partnering with The Nature Conservancy of Indiana and the Agricultural Conservation Easement Program of the Natural Resource Conservation Service we hope to enroll and restore up to 1,000 acres in wetland easements on the Illinois side of the Wabash River.



NLRS (NUTRIENT LOSS REDUCTION STRATEGY)

Helps reduce excess nutrients, like phosphorus, that is carried downstream.

WILDLIFE & HUNTING OR FISHING

**White-Tailed Deer
Wood Ducks
Mallard Ducks
River Otters
Channel Catfish
& more!**

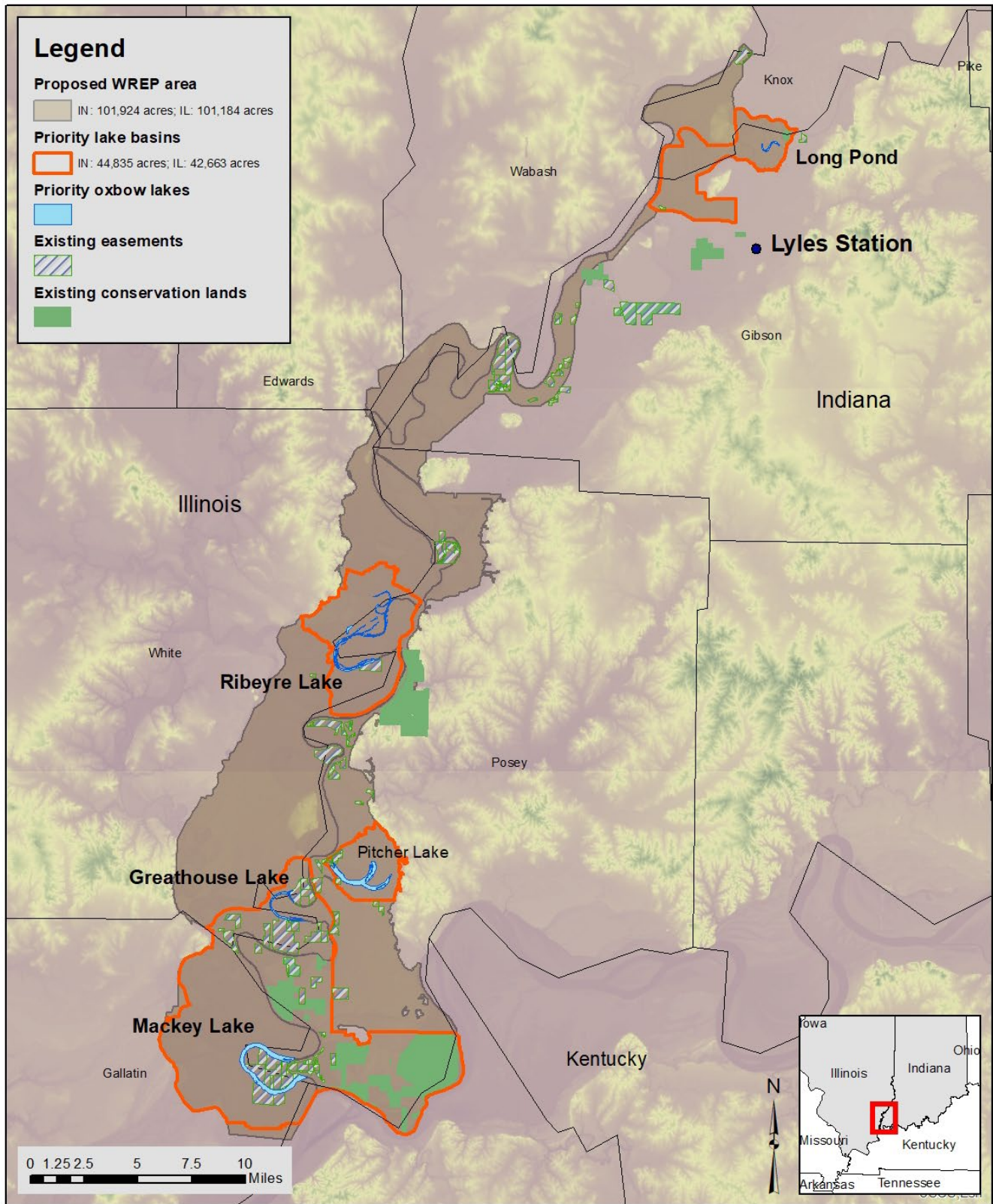
REDUCES FLOODING

and improves water quality along the Wabash River where frequent flooding has damaged farmland and private property.

WRE PAYMENTS

Landowners receive payments for conservation easements on their land. This project removes cropland from agricultural production to restore native wetlands.

Lower Wabash Project area.



Boundaries may not be exact.